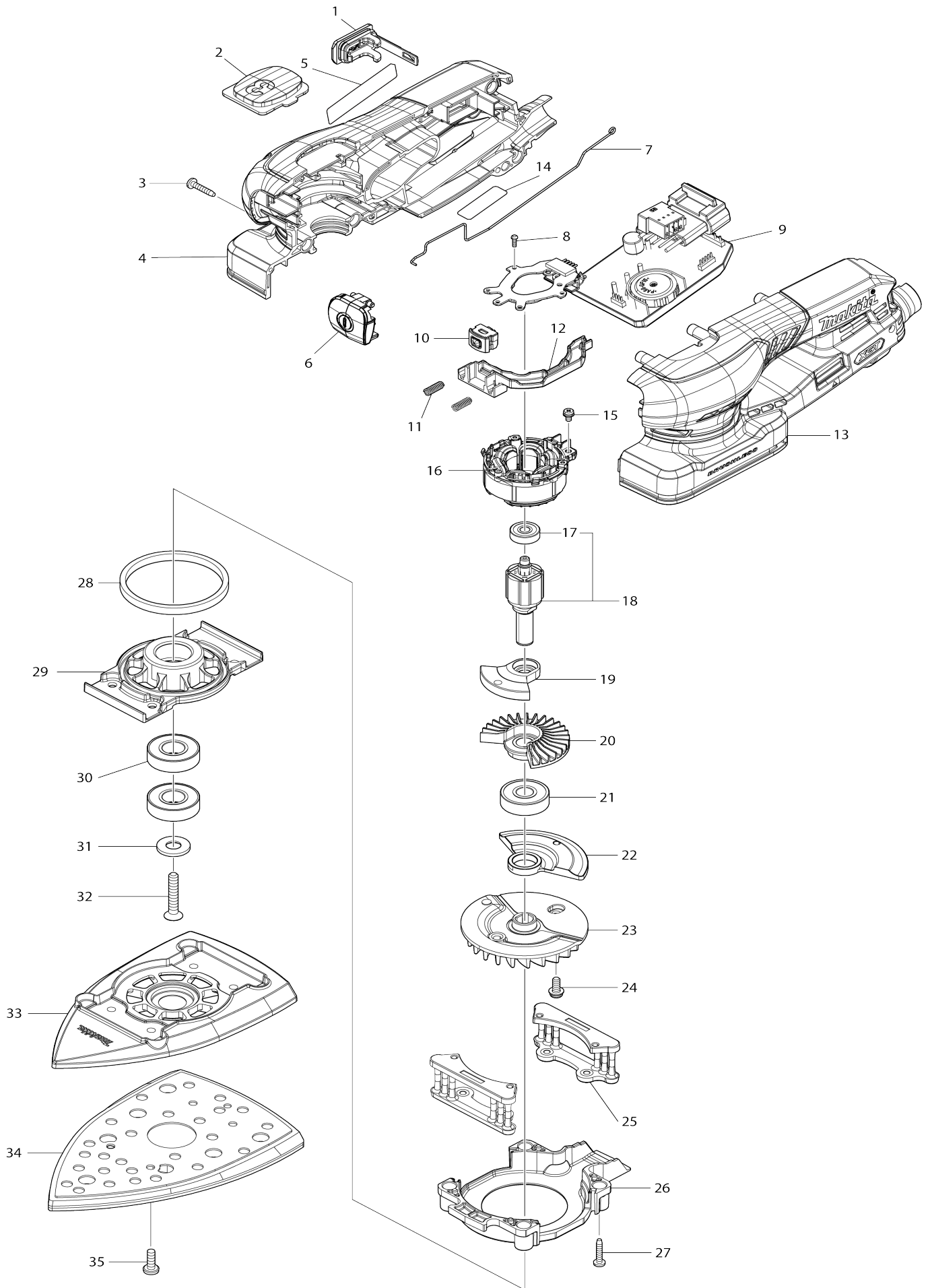


Model No. BO006CG BATTERY POWERED ORBITAL SANDER



Model No.BO006CG BATTERY POWERED ORBITAL SANDER

Item No.	Parts No.	Description	Interchangability	Q'ty	New/Old	Note1	Note2
001	140F99-0	CAP COMPLETE		1			
C10	213A05-9	O-RING16		1			
002	413Y38-0	INDICATION PLATE		1			
003	266429-2	TAPPING SCREW 3X16		7			
004	1830M7-3	HOUSING SET		1			
C10	252126-6	HEX. LOCK NUT M4-7		2			
004		INC. 13					
005	8145X2-6	BO006CG NAME PLATE		1			
006	413Y40-3	SWITCH BUTTON		1			
007	327D52-3	EARTH WIRE		1			
008	266490-9	TAPPING SCREW PT 2X6		3			
009	620P01-4	CONTROLLER		1			
C10	638A87-4	CONNECTOR UNIT		1			
010	632L84-8	SWITCH UNIT		1			
011	233436-0	COMPRESSION SPRING 3		2			
012	413Y39-8	SWITCH HOLDER		1			
013	1830M7-3	HOUSING SET		1			
C10	252126-6	HEX. LOCK NUT M4-7		2			
013		INC. 4					
014	8145X3-4	BO006CG SERIAL NO. LABEL		1			
015	652069-6	FLAT HEAD SCREW M3X6		3			
016	629C62-3	STATOR		1			
017	210035-5	BALL BEARING 625DDW		1			
018	519845-0	ROTOR ASSEMBLY		1			
018		INC. 17					
019	312F19-6	UPPER BALANCE WEIGHT		1			
020	240251-5	FAN 48		1			
021	211092-6	BALL BEARING 629DDW		1			
022	313533-9	LOWER BALANCE WEIGHT		1			
023	240252-3	FAN 68		1			
024	911113-1	PAN HEAD SCREW M4X10 WITH WR		1			
025	413Y53-4	FOOT		2			
026	413Y61-5	FAN GUIDE		1			
027	266429-2	TAPPING SCREW 3X16		4			
028	422B55-1	SPONGE 7X77X3		1			
029	312F15-4	BEARING BOX		1			
030	211131-2	BALL BEARING 6001DDW		2			
031	253602-3	FLAT WASHER 8		1			
032	912252-0	COUNTERSUNK HEAD SCREW M5 X30		1			
033	413Y90-8	BASE		1			
034	141V54-1	PAD COMPLETE		1			
035	915116-7	BINDING HEAD SCREW M4X12		4			
A01	122G32-0	DUST BAG ASSY		1			
A02	154553-2	ARM BAND COMPLETE		1	*		
A02-1	194679-8	ARM BAND COMPLETE SET	O	1			
A03	413Y47-9	FRONT CUFF 22		1			

A04	D-78900	NET SANDING DELTA 100X150 A 120		1		
A05	D-78944	NET SANDING DELTA 100X150		1		
A06	1914H3-6	BATTEY ADAPTER SET		1		
A06		COMPO-PARTS				
A07	413Y92-4	PAD PROTECTOR		1		
A08	327D66-2	TOOL HANGER		1		
A09	251291-8	+ SCREW M4X8		1		
F01	1914H3-6	BATTEY ADAPTER SET		1		
F02	1914H5-2	BATTEY ADAPTER SET		1		
F03	1914H7-8	PROTECTION COVER SET		1		
F04	1914H8-6	HARNESS SET		1		
F05	1914H9-4	SQUARE PAD SET		1		
F06	1914J0-6	TRIANGLE PAD SET		1		

Please state Parts No. when your order.

Print Date 11. 12. 2024